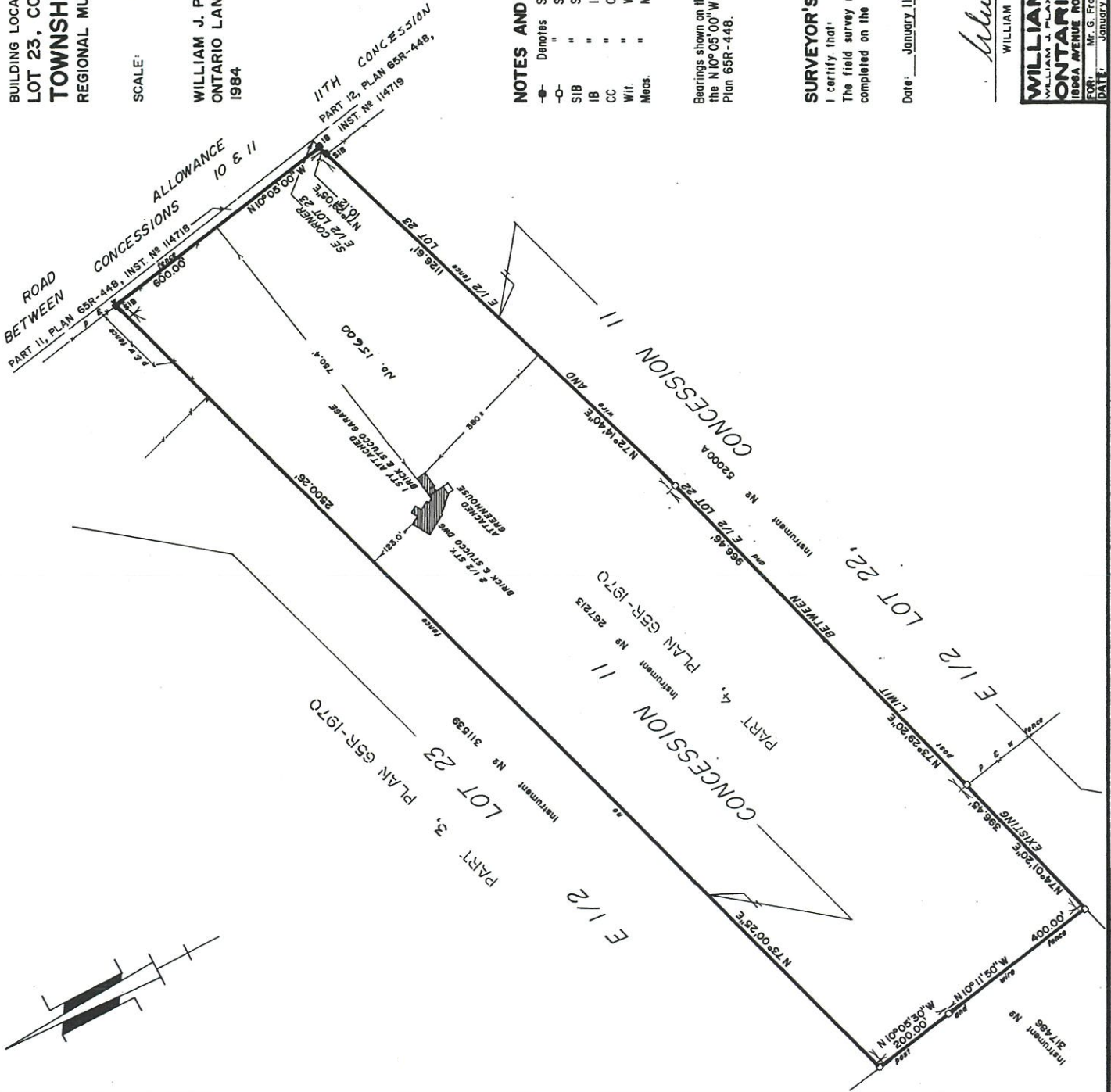


BUILDING LOCATION SURVEY OF PART OF
LOT 23, CONCESSION II
TOWNSHIP OF KING
 REGIONAL MUNICIPALITY OF YORK

SCALE: 1" = 200'

WILLIAM J. PLAXTON LIMITED
 ONTARIO LAND SURVEYORS
 1984



NOTES AND LEGEND

- Denotes Survey Monument Found
- Survey Monument Set.
- SIB Standard Iron Bar
- IB Iron Bar
- CC Cut Cross
- Wit. Witness
- Meas. Measured

Bearings shown on this plan are astronomic and are referred to the N 10° 05' 00\" W of the west limit of Part II, as shown on Plan 65R-448.

SURVEYOR'S CERTIFICATE

I certify that:
 The field survey represented on this plan was completed on the 10th day of January, 1984.

Date: January 11, 1984

William J. Plaxton
 WILLIAM J. PLAXTON
 ONTARIO LAND SURVEYOR

WILLIAM J. PLAXTON LIMITED
 DONALD A. CANNON O.L.S.
ONTARIO LAND SURVEYORS
 188A AVENUE ROAD TORONTO M5M 3Z8
 (416) 799-2124
 DRAWN BY: W.H.
 CHECKED: W.P.
 PROJECT NO. 84-03